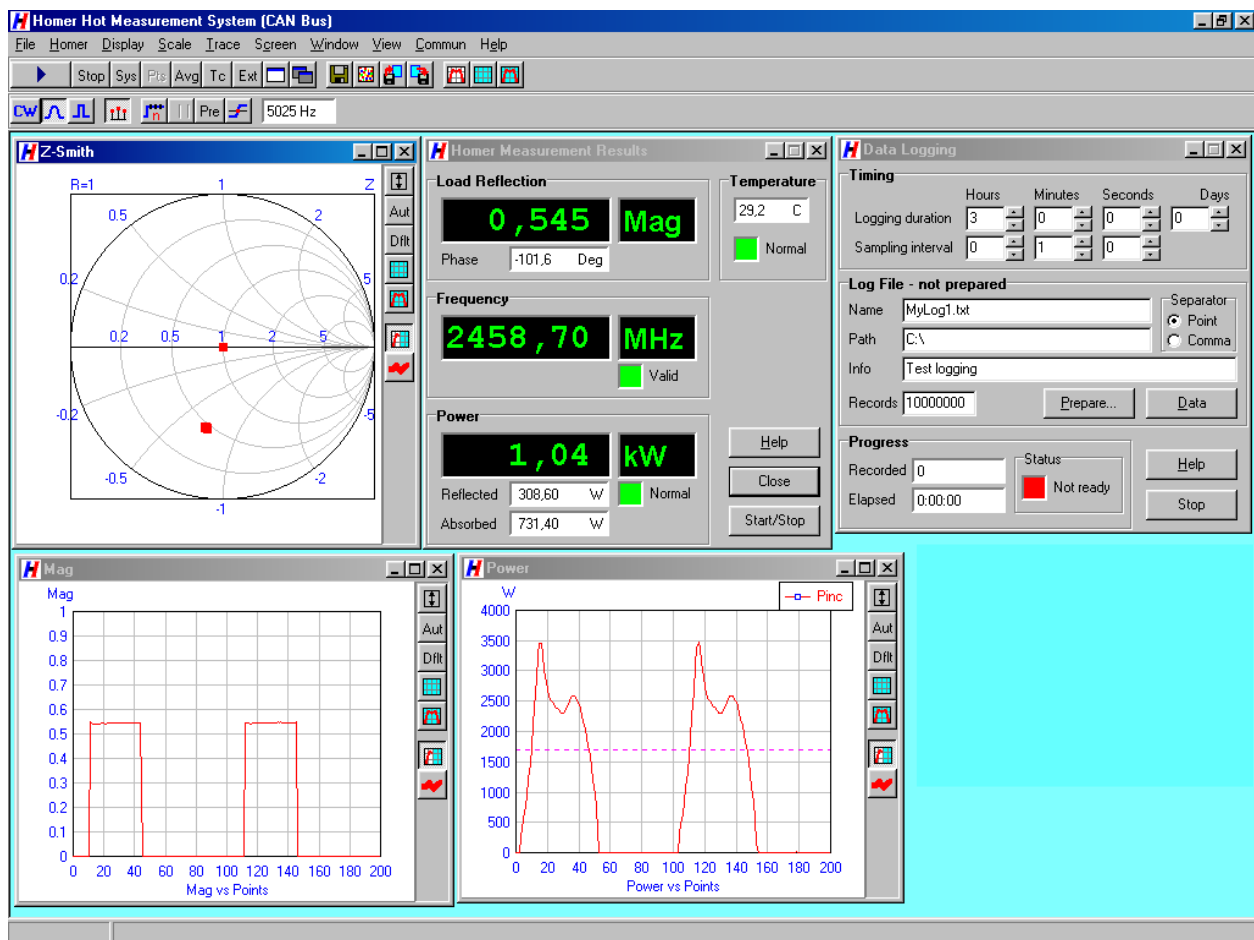


HomSoft Windows Control, Visualization and Data Logging Software

The HomSoft control, visualization and data logging software significantly expands the system capabilities. The basic features include:

- Microsoft Windows® environment
- Accurate measurement of complex reflection coefficient and its displaying in various formats, including
 - Magnitude
 - Phase
 - Return Loss
 - VSWR
 - Polar Display
 - Smith Charts (Z and Y)
 - Rieke-Type Chart
- Measurement of incident, reflected, and absorbed power and its displaying in various formats, including watts, decibels, percentage of incident power
- Numerical readout of signal frequency, load reflection coefficient and power in various formats
- Arbitrary shifting of the measurement plane
- Saving measured data as tables (text files) or pictures (BMP, GIF, JPG)
- Periodic data logging of all or some of the measured quantities
- Multiple windows enabling simultaneous observation of various quantities in different formats
- Wide selection of appearances of displayed curves
- Storing and retrieving of complete system settings tailored to particular tasks
- DDE server option enables another Windows application to share measurement results
- Extensive on-line help



Specifications

Electrical	
Transmission line type	8/26 coaxial (inner conductor diameter 8 mm, outer conductor bore diameter 26 mm)
Characteristic impedance	70.7 ohm
Flange	See dimensional drawing below
Frequency range	2425 to 2475 MHz
Maximum working power ¹²	3 kW
Minimum working power	1 W
Dynamic range of working power	20 dB
Reflection coefficient measurement error (uncertainty circle radius)	0.05
Incident power measurement error (matched load)	±5 %
Power supply voltage	24 V ±10% DC
Power consumption	0.7 A
Interface	RS232 or RS422, CAN, DeviceNet
Modes of operation	CW, Rectified, Pulsed
Max ripple in CW mode	15 % of peak value
Max repetition rate of signal envelope in Rectified mode ³⁾	400 Hz ³
Min pulse width in Pulsed mode	100 µs
Mechanical	
Mass	2.6 kg (5.73 lb)
Length	228 mm (8.98 in)
Width	90 mm (3.54 in)
Height	197 mm (7.76 in)
Environmental	
Operating temperature range	+5 to +55 Celsius
Storage temperature range	-10 to +125 Celsius

¹ Actual maximum working power is fixed according to customer's demand (must not exceed 3 kW). The actual minimum working power is 20 dB (=dynamic range) below the actual maximum operating power or 1 W, whichever is greater.

² In Rectified and Pulsed modes, maximum power means **peak** power (not its mean value).

³ Signal envelope repetition rate (ripple period) f_e is determined by power line frequency f_p and the rectification method. Examples: Half-wave-rectified signal $f_e=f_p$; full-wave-rectified signal $f_e=2f_p$; 3-phase ripple period $f_e=3f_p$ (half-wave rectification), $f_e=6f_p$ (full-wave rectification).

Configurations

Basic Configuration

- STH + Internal firmware (Server)
- RS232 or RS422 serial interface
- CW and Rectified modes of operation
- Operating handbook (pdf)
- Communication protocol manual (pdf)
- Set of standard cables⁴

Options

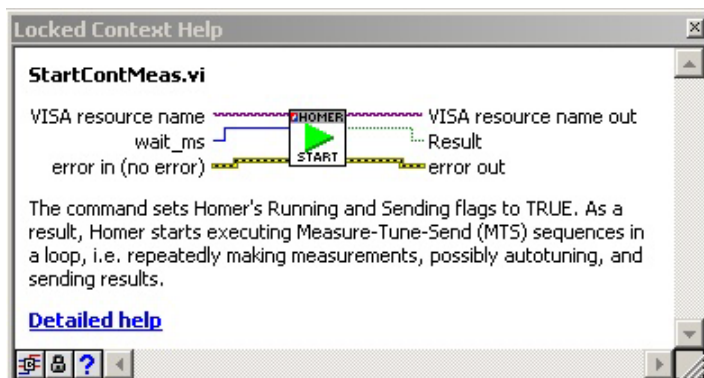
1. **HomSoft** Windows visualization and control software
2. Pulsed mode of operation
3. Additional Server – CAN Bus
4. Additional Server – DeviceNet
5. Dynamic Data Exchange (DDE) server in HomSoft Windows SW⁵
6. LabVIEW Homer virtual instrument library
7. CAN-USB Adapter (to connect PC to CAN Bus or DeviceNet network)
8. Technical support in hours (four hours are complimentary)

Miscellaneous

DeviceNet. Elements of complex industrial applications (sensors, actuators, controllers) are often interconnected via CAN Bus network where special protocols for smooth collaboration are used. One of the common communication protocols is DeviceNet. HOMER can be equipped with internal program (Server) which enables connection to DeviceNet.

DDE Server. DDE Server is a functionality within the *HomSoft* Windows SW hence it needs the *HomSoft Windows visualization and control software* option, too. The DDE Server enables another (customer’s) Windows program to extract measurement results from *HomSoft* program, e.g. to a LabVIEW environment.

LabVIEW Homer Virtual Instruments Library enables HOMER control and monitoring (measurement results retrieval) from within the National Instruments’ LabVIEW environment. The library consists of a number of virtual subinstruments and is accompanied by a few useful examples. The library enables users to integrate HOMER into their own applications with much less effort than trying to start from scratch by studying HOMER communication protocol and programming the communication themselves.



potialto

CAN-USB Adapter. To connect your PC with a CAN Bus network (or with the HOMER alone), the *Sontheim CAN USB Light Dongle* adapter is needed. You can order it as an option. Another possibility is to buy the dongle yourself from the manufacturer (see <http://www.s-i-e.de>).

⁴ Set of standard cables includes DC power supply cable, RS232/RS422 cable, and, in case of CAN Bus, CAN Bus cable.

⁵ *HomSoft* Windows visualization and control SW option required.

Technical support. Very often users, especially in the initial phase, need counsel about issues that are not the matter of HOMER itself but of their particular application, or about topics that are in detail described in the accompanying documentation. Four hours of such support are provided free of charge; additional support should be ordered.

Basic Dimensions (in millimeters)

